

WALLMEK®

INVEST IN TIME



Scan for video



Step 1



EU Patent No. EP 3323553
US Patent No. US 10.532.450

EU Patent No. EP 3168007

Basic Starter Kit

Step 1

The basic starter toolkit is developed to replace front and rear wheel bearings and press out rusted and glued axle shafts on passenger cars, trucks, and SUVs directly on the vehicle in 15 – 30 minutes. Wheel bearings with separate hubs (Gen 1) can be replaced on the car quickly and easily when you use this toolkit.

No more time-consuming struggles in the shop press!

The tool system is easy to build out as you go. See extended and pro kits on pages 2 and 3.



Pressed hub and bearing

LIMITED LIFETIME
WALLMEK
INVEST IN TIME
WARRANTY

www.wallmektools.com
info@wallmek.se

Bultgatan 18, 442 40 Kungälv, Sweden
+1 (646) 585 0524

US Design Patent D863.001

Step 1

Step 2

Scan for video



Basic Extended Starter Kit

Step 2

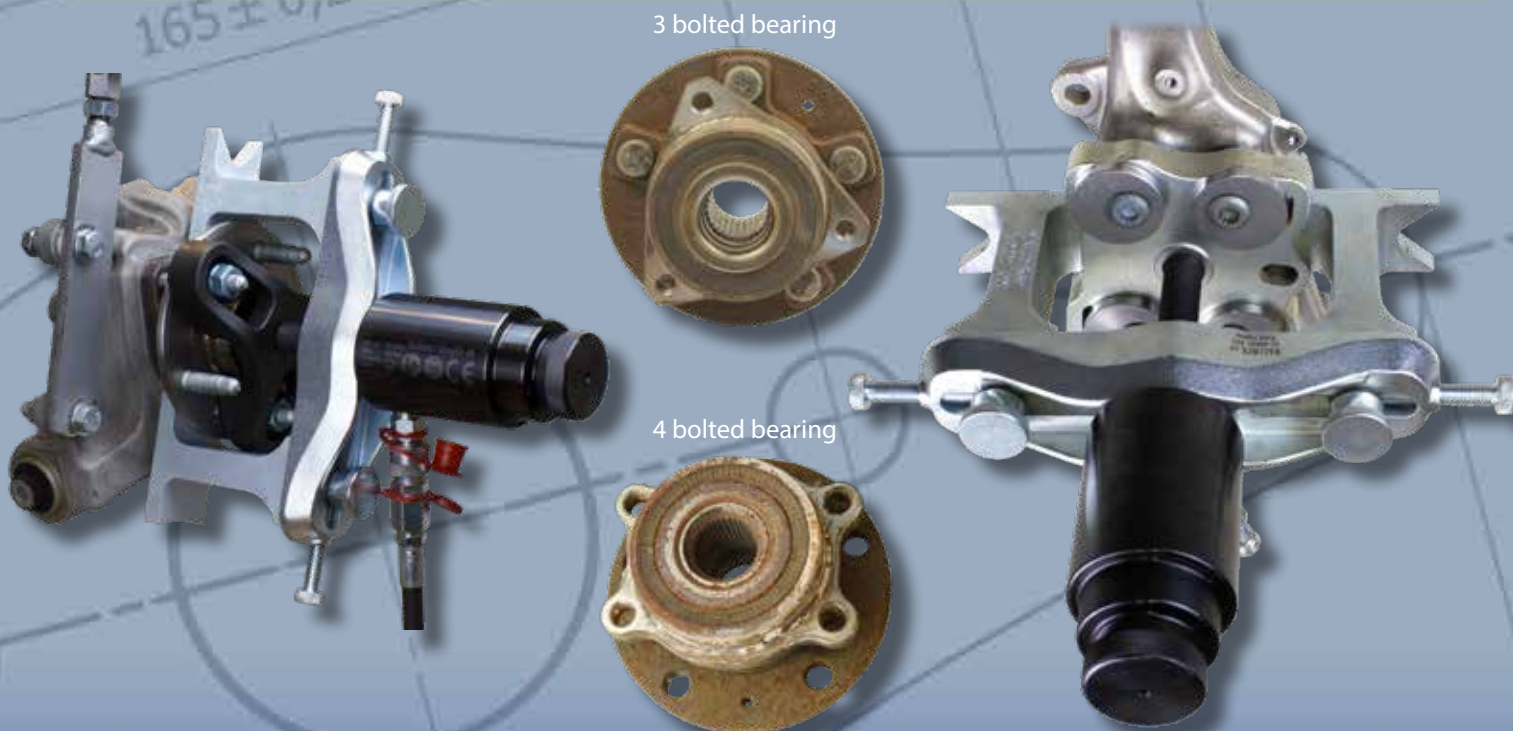
The extended toolkit adds the possibility to replace front and rear bolted wheel bearings (Gen 3) and more on passenger cars, trucks, and SUVs directly on the vehicle in 15 – 30 minutes. ABS sensors, ball joints, etc. are left untouched with the use of a hydraulic cylinder. **No more time-consuming struggles in the shop press.**

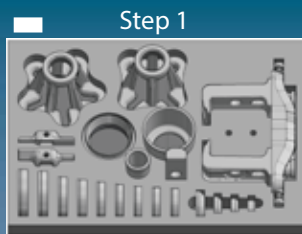
This extension set will disassemble the most stubborn and corroded bolted-in wheel bearings, even with the axle still in the hub. Ford Explorer, Ram 1500, Jeep, GM and many more models are covered in this set.

Basic starter kit (step 1) is included in this kit.

3 bolted bearing

4 bolted bearing





Step 1



Step 2



Step 3

Scan for video



EU Protected Design No.
007749148-0001

Pro Starter Kit

■■■ Step 3

This pro universal starter toolkit adds the possibility to replace front and rear wheel bearings also on trucks directly on the vehicle in 15 – 30 minutes. No more time-consuming struggles in the shop press. Heavy hammering is devastating for the wheel bearing and other sensitive parts when removing seized brake rotors. Airbags have been triggered in some cases as a result of heavy hammering. This kit covers brake rotors with $\varnothing 260 - 390$ mm (10" – 15,4"). No damage on the wheel bearing or other sensitive parts, quick, easy, and safe.

The bearing puller set included in this toolkit cover Trucks (1/4 Ton - 1 Ton) and SUVs with 6-8 lugged hubs. Seized bearings can be a real challenge to replace, but with this tool you'll change bearings in no time. Hammering, chiselling, and all sorts of brute force can damage the vehicle and even the tech.

Basic and extended starter kit (step 1 & 2) is included in this kit.



Bushing & Ball Joint Starter Kit

1090-69 Press block, open plate. Strong and flexible press block for replacing ball joints, bushings and more. Replace a ball-joint or bushing in 5-10 minutes.

01-00003 Universal press tool set 3. Delivered complete with a foam for easy use and storage, measure: 290x415mm. The set can be used in a press, the frame 1090-69 or with pulling rod M10, M12 and M14, or directly in the shop press.

1090-60-10 Set with two Support rods 275mm

1090-60-06 Adapter plate for press block 1090-69

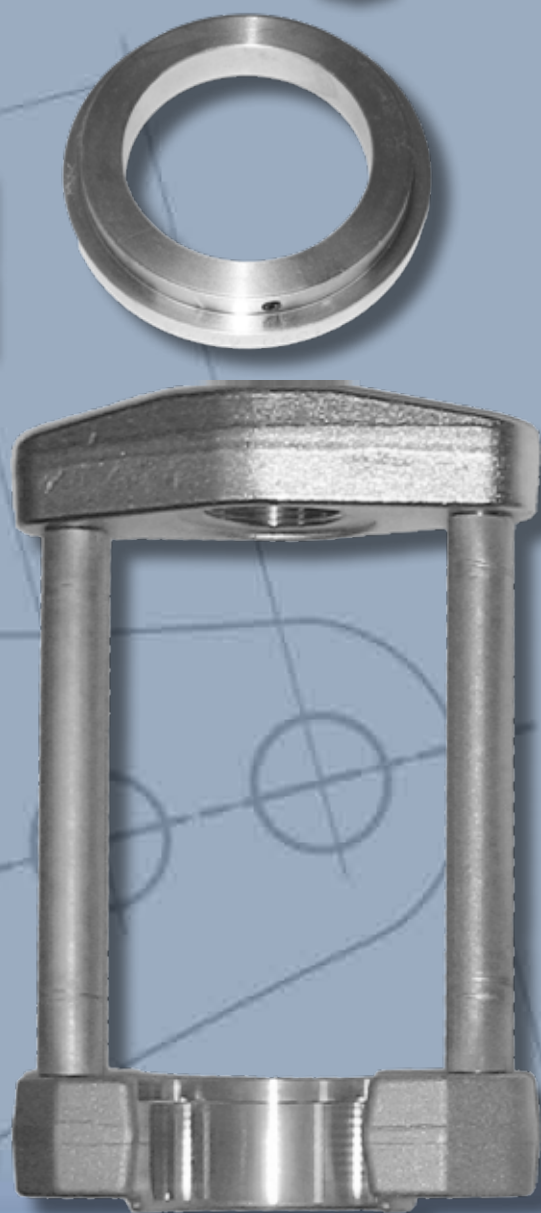
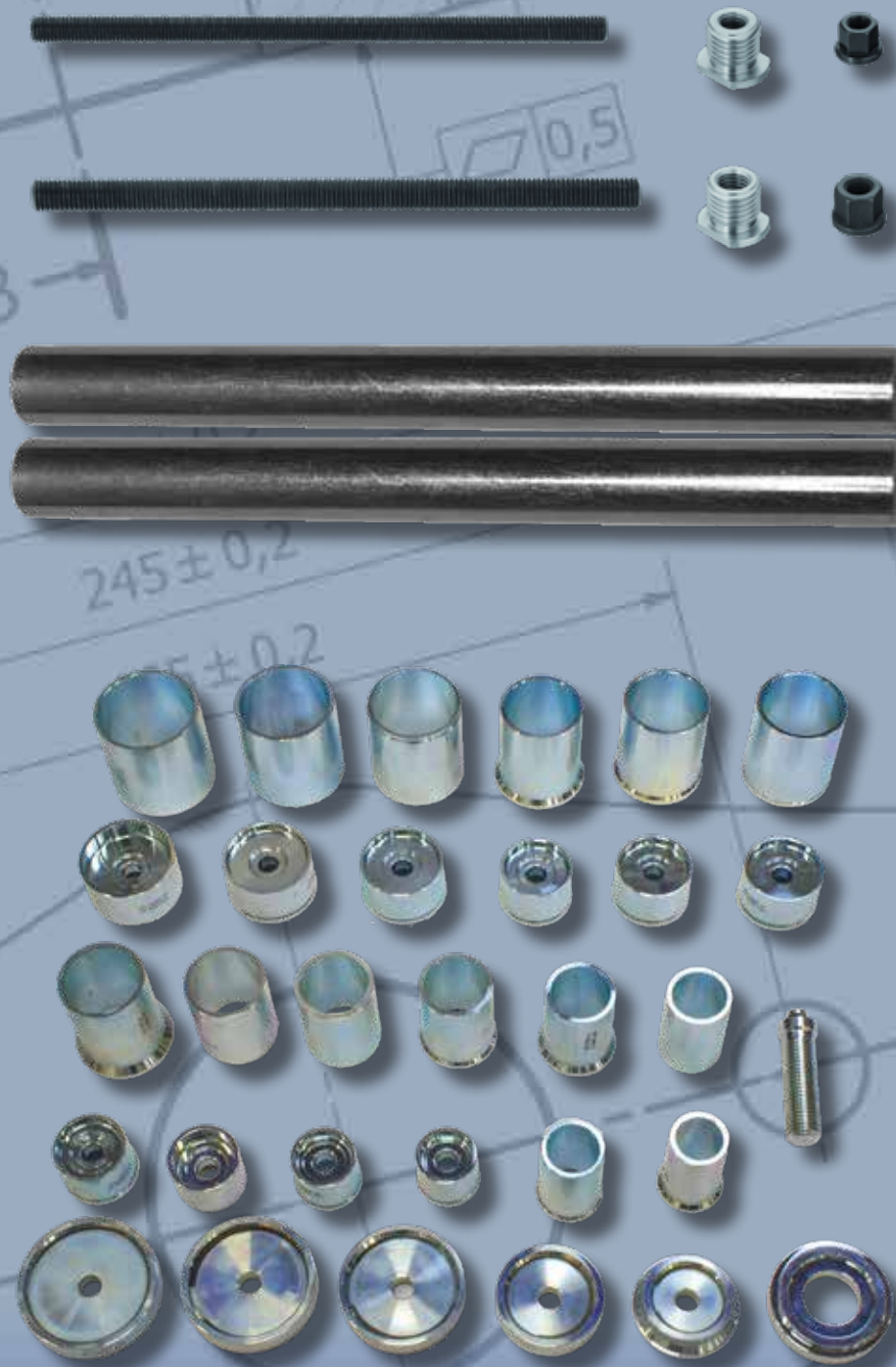
1090-32-12 Carriage beam set M12

1090-32-14 Carriage beam set M14

Press sockets ranging from 42,5-71,5 mm
(1,62- 2,81 inches)



Scan for video



01-00055

Scan for video



Patent Pending

01-00055-030

01-00055-050

Dismantling tool for outer axle shaft

Powerful and extremely effective dismantling tool for the outer CV joint. The method completely prevents pulling and impact in the bearing itself. Only the inner ballrace is loaded without affecting the bearing!

01-00055 Complete set with puller frame, sliding hammer, axle lock and foam.

01-00055-030 CV joint puller frame.

01-00055-050 Axle lock with chain and tensioner.

Dismantling tool for inner axle shaft

The set is delivered with an adjustable axle shaft holder and a powerful 5 kg/10 lbs sliding hammer. Often the inner axle shaft on the left side get severely stuck in the gearbox. A square-shaped lock ring and rust in the splines are what's causing this problem. This new adjustable fixture is designed to be closed around the inner axle shaft, allowing a 100% straight and powerful strike with the sliding hammer. No bending or flexing of the axle! Engine covers, and brackets under the vehicle can be left untouched.



Scan for video



01-00053

*01-00053-100 (No slide hammer)

04-00024



Scan for video



EU Patent No. EP 3424644
US Patent No. US 10.807.222

BALL JOINT SNAPPER 4,5 TON CARS, VANS AND SUV'S

Unique design and function for dismounting the conic bolts on passenger cars, pick-up trucks, and light commercial vehicles with ease. The tool is developed for the new front suspensions with longer conic bolts often fitted in aluminum cones. These fittings sit harder and are more fragile than the older steel versions. It's also the perfect solution for earlier designs.



04-00024-023

PRESS TOOL WITH PINS

Developed for pressing ball-joint and tie rod ends that are locked with a bolt instead of a nut and coned axle. These can get seized and needs to be pressed out. The press tool can be fitted on the cylinder or on the top depending on the accessibility on the vehicle.



Scan for video



04-00024-024

ANVIL TOOL FOR EXTRA-LONG BALL-JOINT PINS

Developed for pressing out extra-long ball-joint pins over 72 mm. Chevrolet and GMC are some of the manufacturers that use longer pins on larger SUVs and trucks. The nut is loosened to a few coils and is used as press support for the press ring in this set.



Scan for video



04-00024-050

SUPPORT ADAPTOR SET VOLVO M10/M12

This set cover the new Volvo models with aluminum knuckles and stuck long ball joints or steering joints, Volvo V, S and XC 40 – 90.



Scan for video



01-00030

Scan for video



EU Patent No. EP 3156179
US Patent No. US 10,047,772

HYDRAULIC CYLINDER 18 METRIC TONNES

18 tons pressing and pulling “light weight” hydraulic cylinder in a compact size with automatic return of the piston, only 2,8 kg. Designed for everyday use in auto repair shops. Can be used with all of our passenger car tools and carriage beams M10-M22 with the proper adaptor. The cylinder’s hydraulic pressure can be combined with punching force when using the punching socket 1086-6. For example when pressing a rusted axle shaft. Stroke: 50 mm. Automatic return.

1036



Scan for video



PNEUMATIC, VARIABLE HYDRAULIC PUMP

Pneumatic driven hydraulic pump with variable speed for better control. Max pressure 700 bar for use with all of our hydraulic cylinders. The pump is delivered with a pressure gauge next to the pedal and 2,2 m hose and drip-free quick coupling.

Oil tank volume 1,3 litres.

POWERSOURCE COMBO - PUMP AND 18 TON CYLINDER

Air operated hydraulic powered set with a light weight 18 Ton push and pull cylinder (01-00030) and a pneumatic quality pump (1036). A pressure gauge makes it easy to see the power being used.

Scan for video



20-03003

HYDRAULIC STRUT TOOL/STATION 2,1 T

1. This unique spring compressor is designed to be a safe, helpful and efficient tool when working with wheel suspensions. With unique adjustment possibilities and special jaws, it covers almost every front and rear spring on passenger cars and light commercial vehicles. It also covers difficult models like Mercedes C and E-class and newer BMW models. Spring with \varnothing 150-240 mm.

2. It allows the mechanic to compress the spring and remove the shock absorber unit from the wheel spindle/knuckle directly on the car. The same function can also be used to unload the lower control arm to its "driving" position when working with ball joints or sway bars. With pressure on the spring, the lower plate rubber can be replaced in just minutes.

3. The upper frame can be mounted upside-down and be used as a lifting jack when working with other jobs on the suspension system. Very useful on both front and rear axle jobs. A safe mobile unit that can be used anywhere in the shop.

The spring compressor comes with a safety strap for extra safe handling.

Scan for video



1.



2.



3.



20-00012

EU Patent No. EP 3117961
US Patent No. US 10.393.184



Scan for video



GENERATION 2 COMPACT BEARING EXTENSION SET

This extension set and method will demount and correctly install Generation 2 Compact wheel bearings (HBU 2.1). This type is standard front wheel bearing on most Volvo S, V and XC models and MB/Dodge Sprinter from 2007-, they will be damaged by pressing on the hub when installing! The job is made directly on the vehicle in 15 minutes or in the shop press. Includes; 01-00041-020, 01-00033-020, 1090-25-12, 1090-25-13 and 1090-25-14.

01-00050-050



Scan for video



ADD ON SET FOR LAND ROVER/RANGE ROVER

This set is developed for all L405, L462, L494, L538, L550, L560 and L633 with aluminum knuckles.



01-00038



Scan for video



ADD ON SET FOR Q7, CAYENNE AND TOUAREG

The front and rear wheel bearing is replaced directly on the car without unnecessary dismantling. The entire job only takes about 30 minutes with this set. The parts are designed to protect the ABS-sensor and other sensitive parts. Must be used with 01-00037.

[illegible]

The bearing set makes it possible to replace the wheel bearing directly on the vehicle with significant time reduction. No wheel alignment is needed. This type of bearing (generation 2) will get internal damage when mounting by pressing on the hub. The full set contains several universal tools for many other jobs. There are also two smaller add on sets available to make the set very cost efficient. 02-00015-010 and 02-00015-015, see our catalog for more information.

02-00013



Scan for video

RAM PROMASTER 1500, 2500, 3500. 2013 - WHEEL BEARING SET FRONT

The wheel bearing is replaced directly on the car with minimum dismantling. Most bearings and hubs on these chassis are extremely stuck, they often need the power of 32 ton combined with punching force to be separated. The set cover models from 2013 and newer. This set can easily be complemented with bearing set rear 02-00014. **Recommended cylinder 03-00028.**



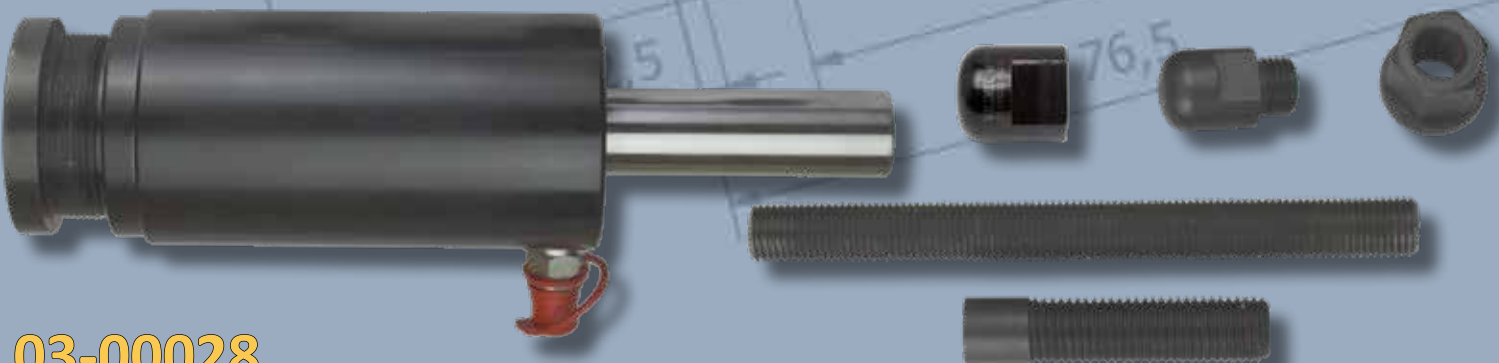
Scan for video

1091-28

02-00014

RAM PROMASTER 1500, 2500, 3500. 2013 - WHEEL BEARING SET REAR

This set is developed for efficient and powerful removal and replacement of the rear wheel bearing. These models often have problems with stuck and rusted bearings on the rear axle stud. This normally makes the job very complicated without special tools. With this set in combination with the 32 Ton cylinder with hammering function will get the job done quickly and easily directly on the vehicle. The 5 holed axle shaft tool 1091-28 also fits most light commercial vehicles with 5 wheel studs. **Recommended cylinder 03-00028. Used with 02-00013.**



03-00028

32 TON CYLINDER

32 tons pressing and pulling hydraulic cylinder. Designed for everyday use in auto repair shops. Primarily for use with our wheel bearing tools for light commercial vehicles and trucks. The cylinder's hydraulic pressure can be combined with punching force adding 3,5 times the effect.

Scan for video



Scan for video



03-00042

EU Patent Pending No. 21160494.7



RIM POPPER FOR TRUCK AND HD TRUCK

- The Rim Popper is designed for maximal efficiency and safety when pulling off seized wheels/rims.
- In just minutes the rim is pulled loose, quick and easy with very little effort by the user.
- The three press rings cover truck, buss and trailer rims with the following sizes: 24,5", 22,5", 19,5" and 17,5".
- By utilising two strong bolts, one after the other, rims can be pried off with a 1/2" impact gun.



BALL JOINT SNAPPER 8,8 Ton

New and unique design that efficiently presses out the ball joints and brake/slack adjuster on trucks, buses, and trailers.



EU Patent No. EP 3424644
US Patent No. US 10.807.222

04-00028

Scan for video



LIMITED LIFETIME
WALLMEK
INVEST IN TIME
WARRANTY

www.wallmektools.com
info@wallmek.se

Bultgatan 18, 442 40 Kungälv, Sweden
+1 (646) 585 0524